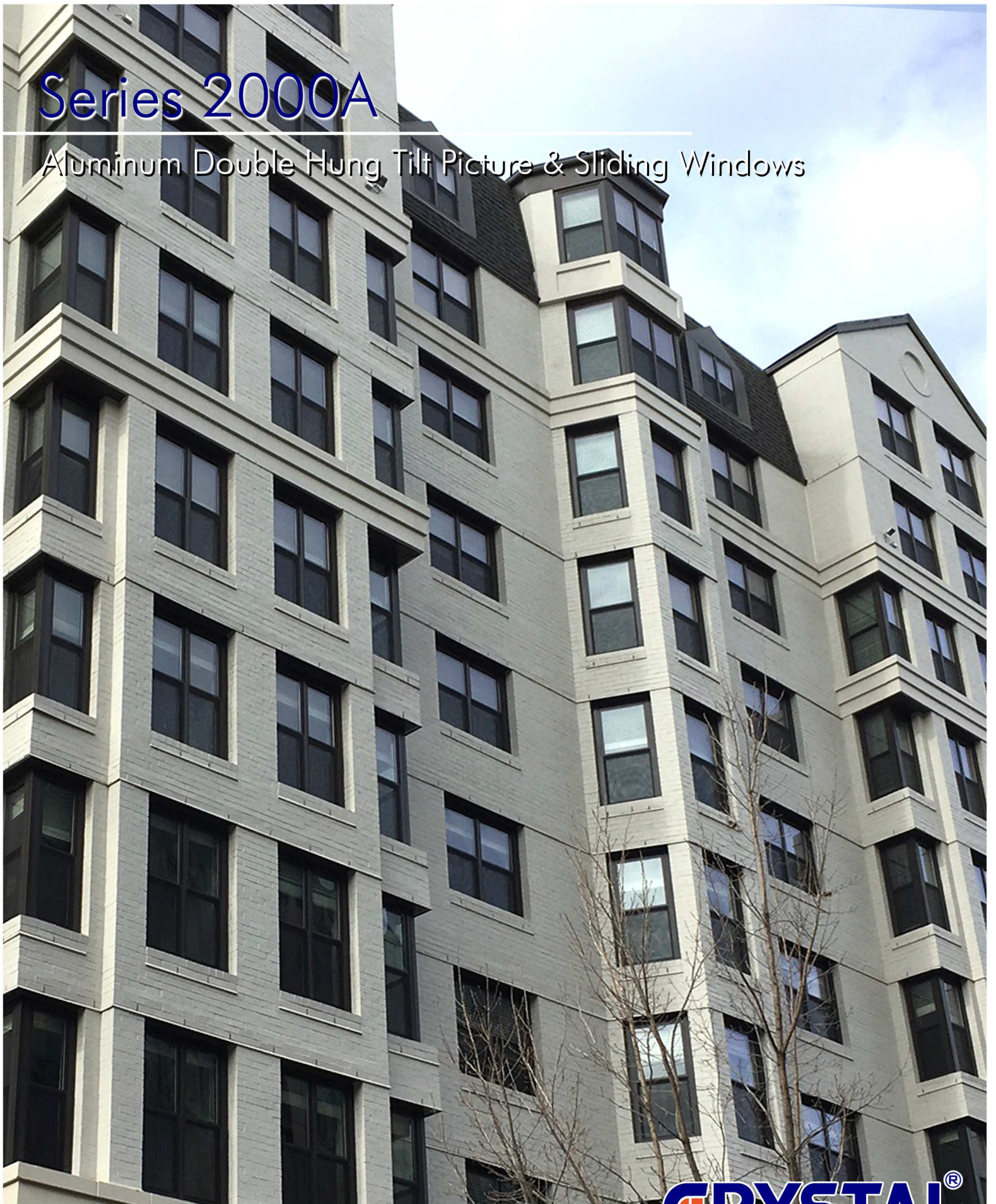


# Series 2000A

Aluminum Double Hung Tilt Picture & Sliding Windows





# Series 2000A Aluminum Thermal-Break Tilt Windows

## 3 1/4" Frame Depth, 7/8" IGU

### All-Round Performer



CTD - 2000A  
AAMA H-C60 / CW-PG50  
IGCC-CBA



CTP - 2100  
AAMA F-HC50  
IGCC-CBA



CTS - 2300  
AAMA HS-C50  
IGCC-CBA

### Crystal 2000A D/H Windows offer these features

- AAMA Ratings - H-C60 / CW-PG50
- Powder Coat Paint on Standard Colors - the ultimate environmental friendly coating designed for durability
- Tilting Sashes - make cleaning easy.
- Full, Curved Lift Handle - ensures ease of operation.
- Anti-Drift Head Clip Lock - automatically secures the top sash in the closed position for safety, security, and a weathertight seal

### Crystal 2100 Picture Windows offer these features

- Maximum Glass with Minimum Frame - provides a beautiful panoramic view of the outdoors.
- AAMA Rating - F-HC50
- Powder Coat Paint on Standard Colors - the ultimate environmental friendly coating designed for durability

### Crystal 2300 2 & 3-Lite Slider Windows offer these features

- AAMA Rating - HS-C50
- Corrosion-Resistant Two-wheel Brass Rollers - ensure smooth and quiet operation.
- Powder Coat Paint on Standard Colors - the ultimate environmental friendly coating designed for durability
- Sloped Sill - helps drain out rain water.
- Removable Sashes - makes cleaning easy.

### Optional Features Available on All Crystal Aluminum Series 2000A Windows Include:

- Special Color Finishes - custom colors or two-tone available.
- Colonial, Diamond or Georgian Grid - provide the elegant appearance of divided light in the same sash.
- Casement Fin - makes window installation easy and neat
- Oriel Windows or A/C Oriel Kit - provides beauty or accommodates air conditioners by having a longer top than bottom sash.
- Continuous Head & Sill configurations available on series 2000A windows
- Low E & Argon - for improved thermal performance.
- Powder Coat Paint on Standard Colors - the ultimate environmental friendly coating designed for durability

\* Product photo for illustration purpose only. Please refer to manufacturer's aluminum product color chart.

## Crystal Window & Door Systems, Ltd.

NYC, NY (HQ) 31-10 Whitestone Expressway, Flushing, NY 11354 Tel: 800.472.9988/718.961.7300 Fax: 718.460.4594  
 SCRANTON, PA 204 Franklin Valley Rd, Dalton, PA 18414 Tel: 570.276.8000 Fax: 570.563.5313  
 CLEVELAND, OH 29299 Clemens Rd. 1-B, Westlake, OH 44145 Tel: 440.871.8694 Fax: 440.871.8690  
 ST. LOUIS, MO 300 Axminister Dr., Fenton, MO 63026 Tel: 636.305.7880 Fax: 636.305.7881  
 CHICAGO, IL 1300 W. 35<sup>th</sup> st. Chicago, IL 60609 Tel: 773.376.6688/888.280.3288 Fax: 773.376.6868  
 RIVERSIDE, CA 1850 Atlanta Ave, CA 92507 Tel: 951.779.9300 Fax: 951.779.6300

Crystal Windows Affiliations:  



Find us on:     

**CRYSTAL**<sup>®</sup>  
 WINDOW & DOOR SYSTEMS, LTD.  
[WWW.CRYSTALWINDOWS.COM](http://WWW.CRYSTALWINDOWS.COM)

MANUFACTURER RESERVES THE RIGHT TO CHANGE PRODUCT DESIGNS, SPECIFICATIONS, DETAILS AND PRICING AT ANY TIME WITHOUT PRIOR NOTIFICATION.